



Juicy CARBON

TECH INFO

"Lightweight, Strong and Durable!"

Carbon fibers are the stiffest and strongest reinforcing fibers for polymer composites. Carbon Fiber surpasses the fatigue resistance of steel, aluminum and titanium.

Type: Hydraulic

Finish: Carbon/Silver

Rotor Size: 160mm, 185mm, 203mm

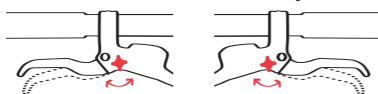
Technologies: Pad Contact Adjustment

Power Reserve Geometry, Low X-Factor

Weight: 395g Front 160mm

Special Features: Tool-Free Pad Replacement, Tri-Align Caliper Positioning System, Fully Ambidextrous, Drip-Free Bleeding

The Power of Pad Contact Adjustment

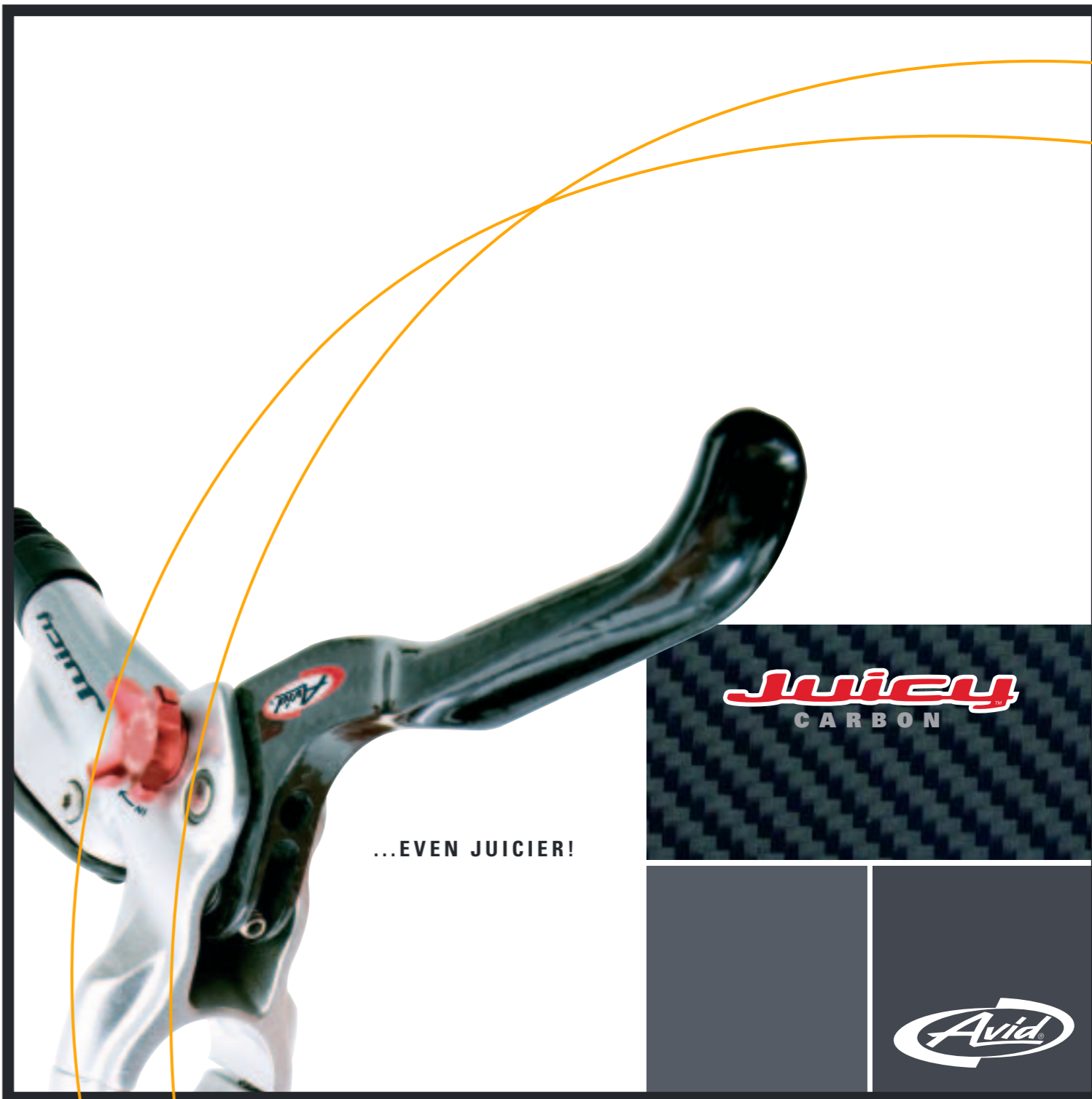


PAD CONTACT-POINT ADJUSTMENT
Making levers perfectly even is a snap with Speed Dial.

POWERED BY SRAM



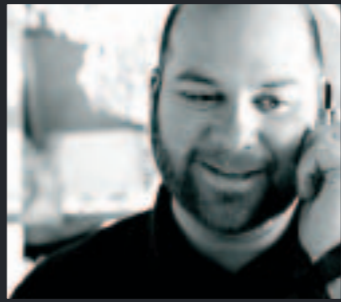
WWW.AVIDBIKE.COM



...EVEN JUICIER!

Juicy CARBON





PAUL FROM AVID:
Paul Kantor, Product Manager for brake systems at SRAM likes it juicy. He has been involved with Avid brake products for the past eight years. "Juicy Carbon is the coolest brake we've made."

**Paul Kantor on:
Why Juicy Carbon is cool?**

"We designed Juicy Carbon to go hand in hand with all the new wicked SRAM "CARBON" components, like the X.0 Trigger and Rear Derailleur"

"We used the strength of the riders hand more efficiently"

"Carbon is warm to the touch but very, very cool."

"The adjustable banjo allows you to position the hose in the perfect angle to the caliper."

"The indexed reach adjuster prevents the piston from moving."

"They call me Bremsen Paul in Germany."

One of the most important parts of any bike brake is the hand that controls it.

Other disc brakes are uneven - the left and right levers don't engage at the same point. This is a problem because it means you don't use both your hands in the same way - the leverage is different. Avid® solved this problem with **Pad Contact Adjustment**. You can adjust the Pad Contact-Point on the fly. The new Aluminum Speed Dial allows you tools-free adjustment of where pad contact occurs in the lever's travel. You can balance your brake power to the way your hand actually works - the perfect balance. Now, with a simple flick of the finger, you can tune the contact to the exact point you like (and the exact point that fits your hand), right on the trail.

Thanks to **Power Reserve Geometry™** Juicy's deliver much more power later into the throw of the lever- where you need it most. We looked at the science of the hand and developed a lever to take full advantage of you hands strengths (X-Factor)

They're easy on the hand that installs them too! There's never been an easier hydraulic disc to install. With Avid's **Tri-Align™ Caliper Positioning System™**, alignment of the brake caliper literally takes seconds, and you're ready to go.

Thanks to Avid's backpack reservoir design each brake lever works on either side. Whether moto or regular, you can switch them in a heartbeat, without even removing your shifters or grips. *Now thats Juicy!*



FACTS

- Carbon Lever & Carbon Reservoir
- Titanium Clamp & Caliper Bolts
- Full Stainless Hardware
- Split Clamp Design
- Indexed Reach Adjuster
- Aluminum Pad Contact Adjustment Knob

